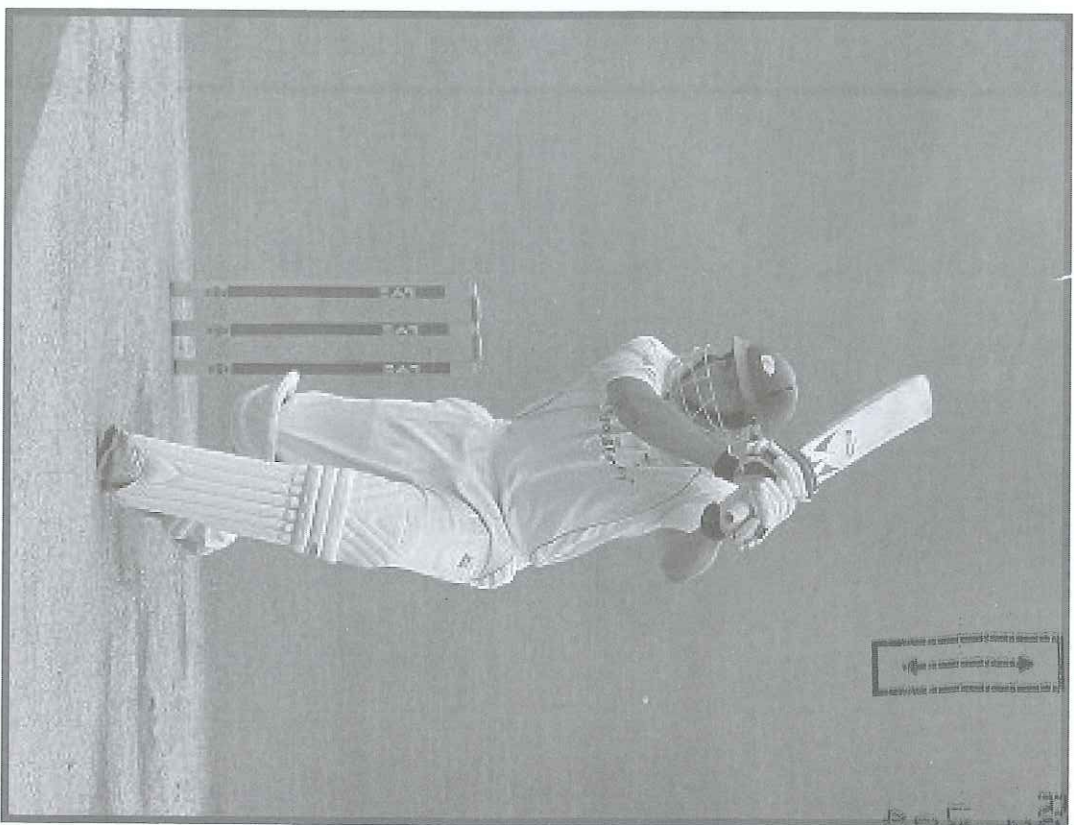


Below is a sample of the envelope designed, printed and sent back to gne from Nick Hare
Work Experience Jul 09

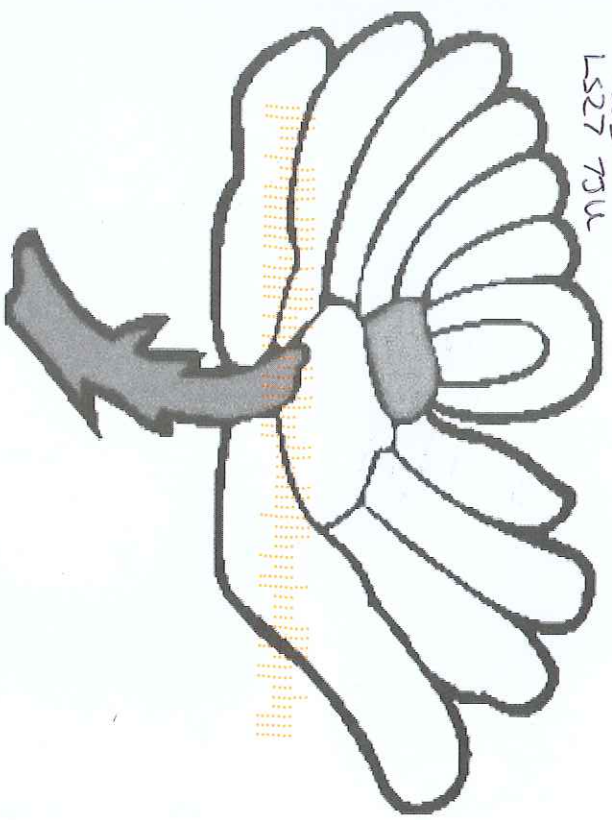


Work experience at Office
Great Northern Envelopes
2009



Mr W Sherman
GNE
2800 783 671

Pullman House
Treefield Industrial Estate
Gelderd Road
Leeds
LS27 7SU



Yorkshire County Cricket Club

